

# TSU Dial Backup Option Modules

## Disaster Recovery Solutions for TSU Multiplexer

### Product Features

- 2 modules available for adding DBU capability to any TSU 100, TSU 120, TSU 600/600e or ESU 120e
- Plug-In or Full Slot expansion modules available
- Specific modules support port-specific or multi-port DBU
- Provide disaster recovery solutions for Frame Relay, point-to-point and multi-point networking
- Nx56/64 DBU capability from 56 kbps to 1.536 Mbps
- Physical V.35 interface to external DCE
- DTR dialing support
- Menu operation for easy configuration
- Standard 5-year warranty

### The Disaster Recovery Expansion Module includes two modules for maximum Dial Backup flexibility for the TSU™ 100, TSU™ 120, and TSU™ 600/600e and ESU 120e.

The Multi Port DBU and the NxDBU provide expansion modules in Plug-In and Full Slot expansion module format. Each module provides unique capabilities when used for disaster recovery preparation in networking applications. All DBU modules are designed to be inserted into the expansion slot of a TSU and are subject to the units operations and control. Both DBU modules provide fast, reliable backup of data circuits to an external DCE device.

ADTRAN provides several dedicated and switched products to meet a variety of backup requirements. For example, ADTRAN products such as the DSU IV support a single SW56 circuit for a backup path. For greater than 56 kbps dial backup bandwidth, ADTRAN offers the ISU 128® and ISU 512™. These ISDN terminal adapters support from one to four BRI-ISDN circuits for backup bandwidth from 128k to 512k. For total T1 bandwidth backup, the DBU module provides the entire 1.544 Mbps data stream to an external TSU-T1 DSU/CSU.

### Plug-In or Full Slot Expansion Modules Available

The Multi Port DBU Module provides multiple DS0 channel backup over the same DBU circuit. By multiplexing the DS0's from selected channels in the TSU, the Multi Port DBU module provides up to 1.544 Mbps bandwidth to an external DCE device. When using the ISU 512e and four BRI-ISDN circuits for switched dial backup, the Multi Port DBU Module can transmit data from 8 independent and separate data DS0 channels. This method of backup allows a single backup path to carry multiple data applications. This module is available as a plug-in expansion module only.

The NxDBU Module incorporates the Nx56/64 V.35 DTE interface as well as the V.35 DCE DBU interface in a single, full slot card. This module provides the seamless backup of the V.35 DTE port through the adjacent V.35 DBU port. The NxDBU module is ideal for applications where the host site TSU is connected to several remote sites via FT1. In the case of a single remote site failure, the host site NxDBU module would only activate the dial backup function for the failed link, allowing the remainder of the point to point links to remain active.



**ADTRAN, Inc.**  
 Attn: Enterprise Networks  
 901 Explorer Boulevard  
 Huntsville, AL 35806

P.O. Box 140000  
 Huntsville, AL 35814-4000

256 963-8000 voice  
 256 963-8699 fax  
 256 963-8200 fax back

**General Information**  
 800 9ADTRAN  
 info@adtran.com  
 www.adtran.com

**Pre-Sales  
 Technical Support**  
 800 615-1176 toll-free  
 application.engineer@adtran.com  
 www.adtran.com/support

**Where to Buy**  
 877 280-8416 toll-free  
 channel.sales@adtran.com  
 www.adtran.com/where2buy

**Post-Sales  
 Technical Support**  
 888 423-8726  
 support@adtran.com  
 www.adtran.com/support

**ACES Installation &  
 Maintenance Service**  
 888 874-ACES  
 aces@adtran.com  
 www.adtran.com/support

**International Inquiries**  
 256 963 8000 voice  
 256 963-6300 fax  
 international@adtran.com  
 www.adtran.com/international

**For the regional office  
 nearest you, visit:**  
 www.adtran.com/where2buy

# TSU Dial Backup Option Modules

## Disaster Recovery Solutions for TSU Multiplexer

### Product Specifications

#### DTE/DCE Interface

- CCITT V.35 Interface

#### Dialing

- DTR Dialing

#### Rates

- 56 kbps - 1.536 Mbps in 56k or 64k increments (Multi-Port DBU in 64k increments only).
- Clocking Derived from external DCE device

#### Tests

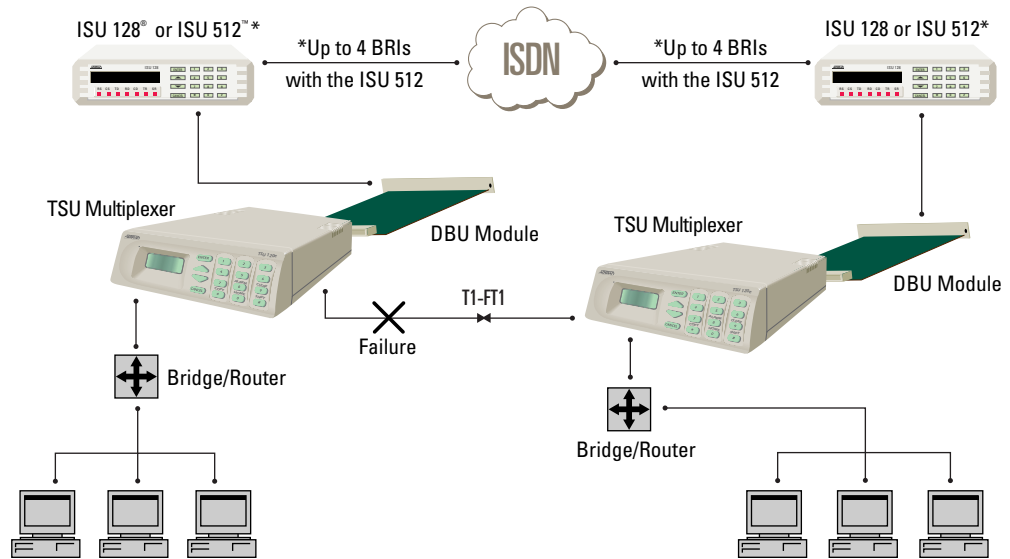
- Local loopback toward DCE
- Self test

#### Connector

- Female V.35 Winchester M.34 Block (on all modules)

### Ordering Information

Equipment	Part #
Multi-Port DBU Expansion Module	1200089L2#HS
NxDBU Module (Full Slot)	1200158L1#HS



I.S. EN ISO 9001  
 ADTRAN is a  
 ISO 9001 registered company.



TL 9000  
 ADTRAN is a  
 TL 9000 registered company.

Printed in the U.S.A.  
 61200089L2-8D May 2002  
 ©2002 ADTRAN, Inc. All rights reserved.

Specifications subject to change without notice. ADTRAN is a trademark of ADTRAN, Inc. All registered trademarks and trademarks mentioned in this publication are the property of their respective owners.